

# HIGH-PERFORMANCE ALLOYS

Nickel Base  
Iron - Nickel Base  
Cobalt Base Alloys

鎳基合金  
鐵 - 鎳基合金  
鈷基合金



**TCA**

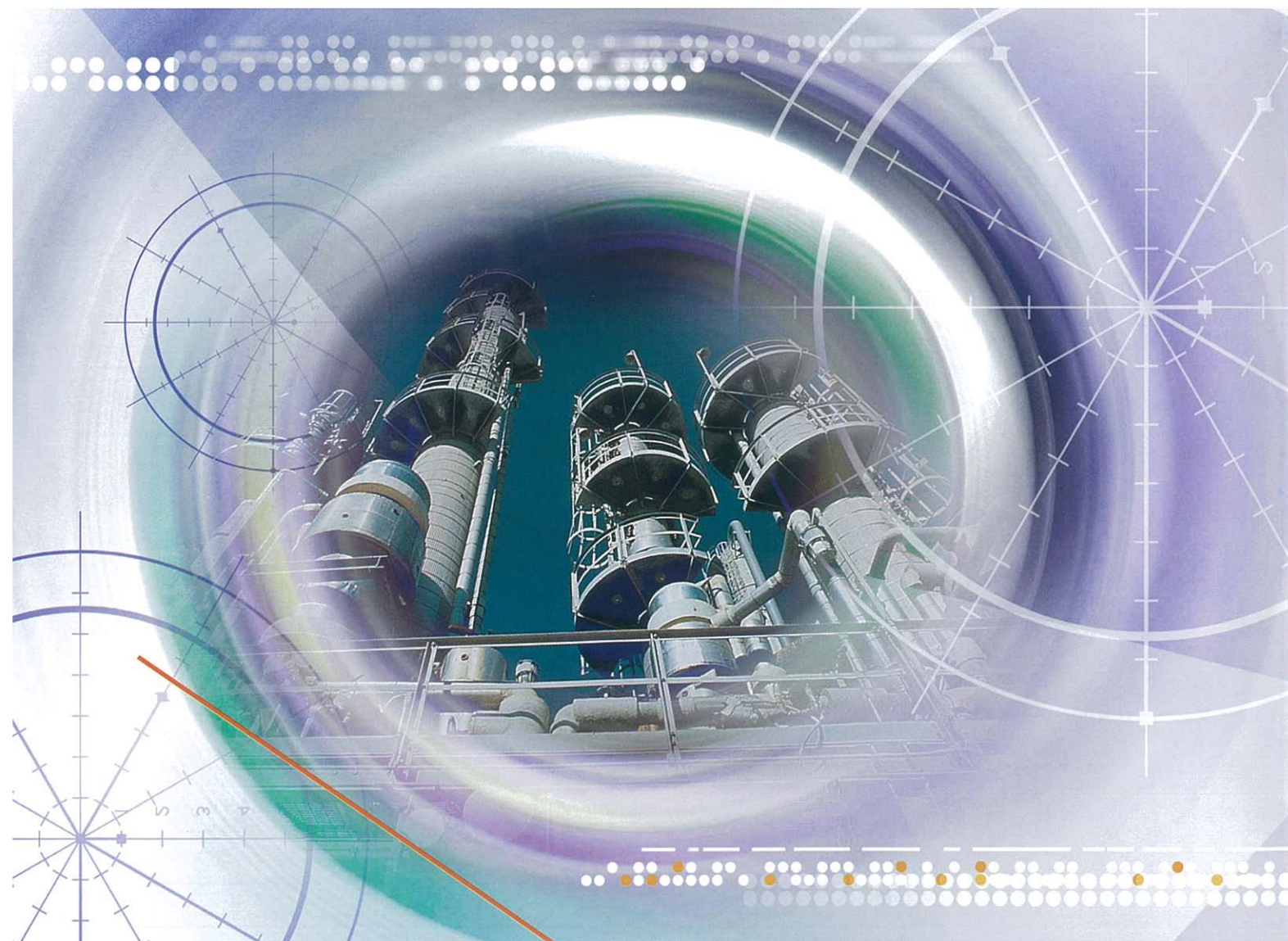
**TCA**

意鑫合金工業股份有限公司  
Transcrystal Alloy Industrial Corp.

公司 / HEAD OFFICE  
台灣台北市羅斯福路三段76號2樓之2  
電話：+886(2)2367-8811  
傳真：+886(2)2368-5475  
2F-2 NO76, SEC.3 ROOSEVELT ROAD  
TAIPEI, TAIWAN, R.O.C  
TEL：+886(2)2367-8811  
FAX：+886(2)2368-5475  
E-mail：tcaic@ms34.hinet.net

工廠 / FACTORY  
台灣苗栗縣後龍鎮溪洲里8鄰勝利路296號  
電話：+886(37)776-080  
傳真：+886(37)733-968  
NO.296, SHENGLI ROAD, HOU LUNG CHEN,  
MIAO-LI TAIWAN, R.O.C  
TEL：+886(37)776-080  
FAX：+886(37)733-968





意鑫合金工業股份有限公司成立於1984年，具有完整而精湛的特殊合金鑄造及加工技術，能以脫臘精密鑄造或砂模鑄造，專業生產特殊合金法蘭及閥類系列產品如球閥、閘閥、止回閥、球塞閥等，材質為各類哈氏合金N10665(B2)，N10276(C276),N06022(C22)及各種特殊不鏽鋼合金等，具高溫強度，耐酸鹼腐蝕、抗磨耗、抗高溫氧化、硫化、氮化及碳化，適用於各種嚴苛的環境。公司亦可承製客戶所需求之各種規格、尺寸，及材質的合金設備及零組件，並針對客戶各種使用環境，材料選擇提供諮詢服務及材料選擇方案。

意鑫合金公司特殊合金產品的主要客戶包括台塑集團、中國石油公司、台灣電力公司、中國鋼鐵公司及歐美、東南亞等近百家廠商及相關高科技研究機構，廣泛運用在石油化學煉製業、具強腐蝕性之化學工業、肥料生產製程、鋼鐵製造、航太科技、環境保護等行業。

我們將以優質的服務，最可靠的產品品質來服務客戶。敬請國內外客商來公司指導參觀！意鑫合金工業股份有限公司願與世界各地朋友及同仁真誠合作！

Transcrystal Alloy Industrial Corp. (TCA) was established in 1984 and specialized in producing all kinds of alloys and superalloys flanges and valves such as global valve, gate valve, check valve, ball valve, etc. TCA is also specialized in the production of Ni alloys such as N10665 (B2), N10276 (C-276), N06022 (C22) or special stainless steel alloys. All of these alloys are excellent in corrosion resistance, wear resistance, oxidation, sulfurization, nitridation and carburization resistance. With their superior characteristics, these materials are suitable for industrial application where corrosive, abrasive and high temperature applications are applied. TCA also have the capability to produce the products according to customer's requirements. With our experienced material and mechanical engineers, we will work closing to domestic customers in engineering and material selection.

TCA are selling to the markets all around the world especially in petrochemical Industry, acid and chloride alkali plant, fertilizer plants, steel works, aero Industry and environmental protection industry. Our customers include FPG, CPC, Tai-Power, China Steel and so on.

We will serve our customer with excellent and reliable quality. We would like to invite all the domestic and foreign customers to visit our company and is looking forward to meeting with the friends from all over the world.



Transcrystal Alloy Industrial Corp.  
意鑫合金工業股份有限公司



# 閥類、法蘭及特殊合金零件 Valves、Flanges And Special Alloy Components

# 生產過程 / Production Process



本公司除生產各種法蘭、閥類系列產品外，同時為提供客戶更完整服務，本公司亦供應各種機械零組件，並專業代理各種特殊合金素材一板、棒、線、管及焊材，我們經常性的與世界上各大原材料供應商維持密切的聯繫，而得以最迅速、完整的服務客戶。

上述產品皆另備詳細型錄，歡迎索取。

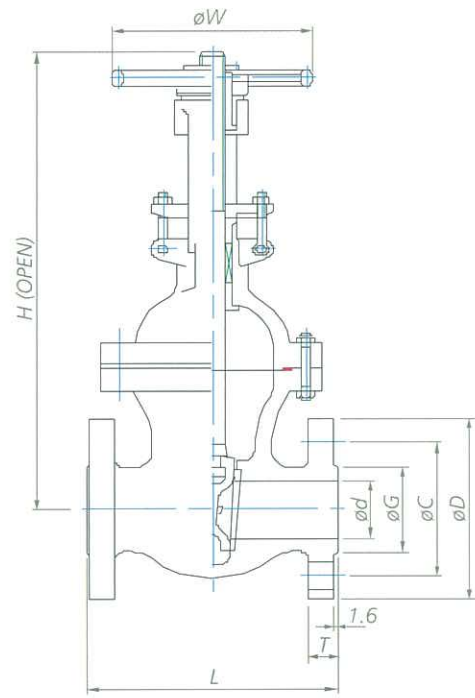
We provide all kinds of Flanges and Valves, and we serve our customers by supplying plates, tubes, fittings, welding materials...etc.as the agent of materials supplier in Taiwan.

The continuous and close connection we have with the main material-suppliers reinforces our prompt and complete service.





Gate Valve 1/2" ~ 24" x 150LB RF



Dimension (mm)									
Size	d	L	H	W	D	C	G	T	
1/2"	12.7	108	202	100	90	60.3	34.9	11.2	
3/4"	19.1	117	220	100	100	69.9	42.9	12.8	
1"	25.4	127	238	100	110	79.4	50.8	14.3	
1-1/2"	38.1	165	286	150	125	98.4	73.0	17.5	
2"	50.8	178	338	150	150	120.7	92.1	19.1	
3"	76.2	203	455	200	190	152.4	127.0	23.9	
4"	101.6	229	545	250	230	190.5	157.2	23.9	
6"	152.4	267	740	300	280	241.3	215.9	25.5	
8"	203.2	292	943	300	345	298.5	269.9	28.6	
10"	254.0	330	1145	350	405	362.0	323.8	30.2	
12"	304.8	356	1348	400	485	431.8	381.0	31.8	
16"	406.4	406	1869	500	595	539.8	469.9	36.6	
20"	508.0	457	2129	600	700	635.0	584.2	42.9	
24"	609.6	508	2565	700	815	749.3	692.2	47.7	

※製作材質詳列於後，可依客戶需求提供其他材料

Flange : ANSI B16.5

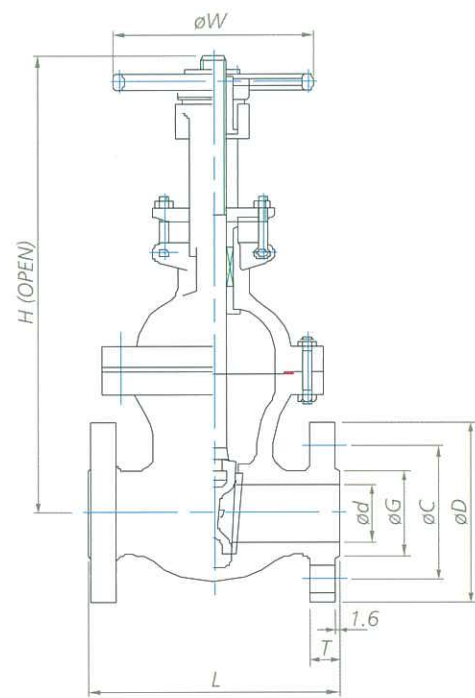
Face To Face :  
ANSI B16.10

Wall Thickness :  
API 600/ ANSI B16.34

Pressure Test : API 598

Test Pressure			
Shell	Seat		
	By Water	By Water	By Air
31 kg/cm <sup>2</sup> (475 psi)	23 kg/cm <sup>2</sup> (350 psi)	6 kg/cm <sup>2</sup> (80 psi)	

Gate Valve 1/2" ~ 12" x 300LB RF



Dimension (mm)									
Size	d	L	H	W	D	C	G	T	
1/2"	12.7	140	380	100	95	66.7	34.9	14.3	
3/4"	19.1	152	410	100	115	82.6	42.9	15.9	
1"	25.4	165	420	150	125	88.9	50.8	17.5	
1-1/2"	38.1	190	442	200	155	114.3	73.0	20.7	
2"	50.8	216	460	200	165	127.0	92.1	22.3	
3"	76.2	282	550	250	210	168.3	127.0	28.6	
4"	101.6	305	624	300	255	200.0	157.2	31.8	
6"	152.4	403	840	350	320	269.9	215.9	36.6	
8"	203.2	419	1043	400	380	330.2	269.9	41.3	
10"	254.0	457	1290	450	445	387.4	323.8	47.7	
12"	304.8	502	1588	500	520	450.8	381.0	50.9	

※製作材質詳列於後，可依客戶需求提供其他材料

Flange : ANSI B16.5

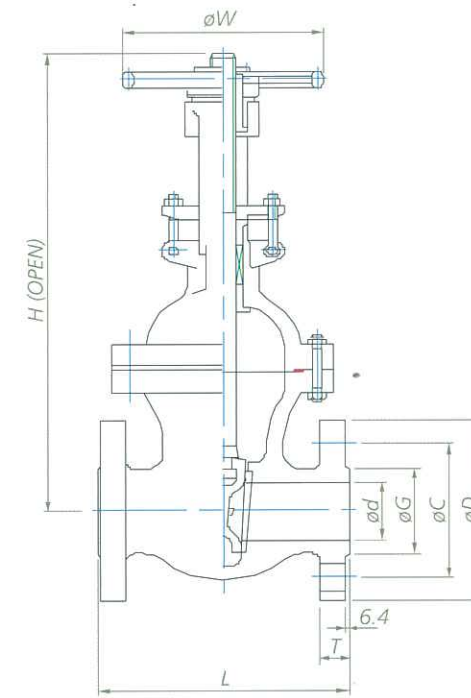
Face To Face :  
ANSI B16.10

Wall Thickness :  
API 600/ ANSI B16.34

Pressure Test : API 598

Test Pressure			
Shell	Seat		
	By Water	By Water	By Air
79 kg/cm <sup>2</sup> (1175 psi)	58 kg/cm <sup>2</sup> (875 psi)	6 kg/cm <sup>2</sup> (80 psi)	

Gate Valve 1/2" ~ 12" x 600LB RF



Dimension (mm)									
Size	d	L	H	W	D	C	G	T	
1/2"	12.7	165	165	100	95	66.7	34.9	20.7	
3/4"	19.1	190	165	100	115	82.6	42.9	22.3	
1"	25.4	216	200	120	125	88.9	50.8	23.9	
1-1/2"	38.1	241	260	146	155	114.3	73.0	28.7	
2"	50.8	292	440	146	165	127.0	92.1	31.8	
3"	76.2	356	567	300	210	168.3	127.0	38.2	
4"	101.6	432	677	350	275	215.9	157.2	44.5	
6"	152.4	559	894	450	355	292.1	215.9	54.1	
8"	203.2	660	1085	500	420	349.2	269.9	62.0	
10"	254.0	787	1277	700	510	431.8	323.8	69.9	
12"	304.8	838	1505	800	560	489.0	381.0	73.1	

※製作材質詳列於後，可依客戶需求提供其他材料

Flange : ANSI B16.5

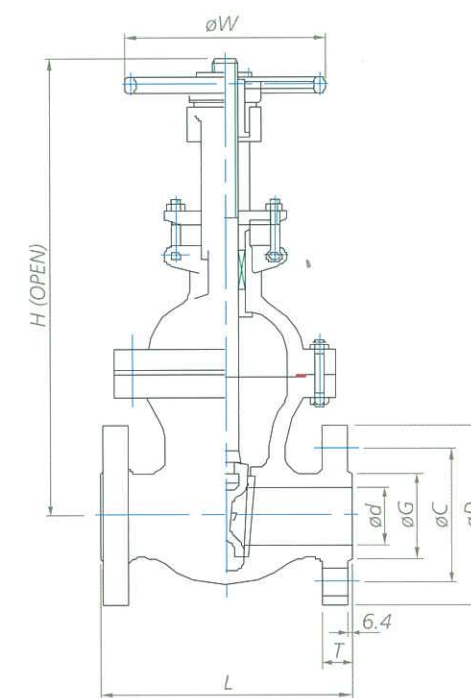
Face To Face :  
ANSI B16.10

Wall Thickness :  
API 600/ ANSI B16.34

Pressure Test : API 598

Test Pressure			
Shell	Seat		
	By Water	By Water	By Air
158 kg/cm <sup>2</sup> (2325 psi)	116 kg/cm <sup>2</sup> (1725 psi)	6 kg/cm <sup>2</sup> (80 psi)	

Gate Valve 1/2" ~ 4" x 900LB RF



Dimension (mm)									
Size	d	L	H	W	D	C	G	T	
1/2"	12.7	190	200	100	120	82.6	34.9	28.7	
3/4"	19.1	216	260	120	130	88.9	42.9	31.8	
1"	25.4	254	440	120	150	101.6	50.8	35.0	
1-1/2"	38.1	305	500	300	180	123.8	73.0	38.2	
2"	50.8	368	615	300	215	165.1	92.1	44.5	
3"	76.2	381	760	350	240	190.5	127.0	44.5	
4"	101.6	457	868	400	290	235.0	157.2	50.9	

※製作材質詳列於後，可依客戶需求提供其他材料

Flange : ANSI B16.5

Face To Face :  
ANSI B16.10

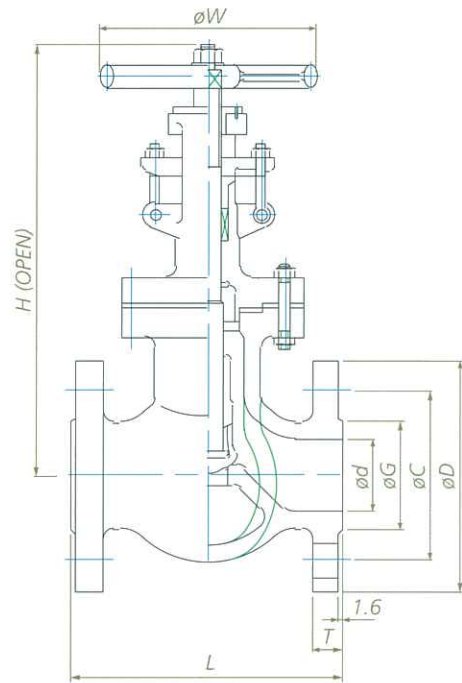
Wall Thickness :  
API 600/ ANSI B16.34

Pressure Test : API 598

Test Pressure			
Shell	Seat		
	By Water	By Water	By Air
237 kg/cm <sup>2</sup> (3500 psi)	174 kg/cm <sup>2</sup> (2575 psi)	6 kg/cm <sup>2</sup> (80 psi)	



Globe Valve 1/2" ~ 20" x 150LB RF



Dimension (mm)									
Size	d	L	H	W	D	C	G	T	
1/2"	12.7	108	200	100	90	60.3	34.9	11.2	
3/4"	19.1	117	213	100	100	69.9	42.9	12.8	
1"	25.4	127	248	100	110	79.4	50.8	14.3	
1-1/2"	38.1	165	280	200	125	98.4	73.0	17.5	
2"	50.8	203	319	200	150	120.7	92.1	19.1	
3"	76.2	241	380	250	190	152.4	127.0	23.9	
4"	101.6	292	416	300	230	190.5	157.2	23.9	
6"	152.4	406	535	400	280	241.3	215.9	25.5	
8"	203.2	495	614	450	345	298.5	269.9	28.6	
10"	254.0	622	735	550	405	362.0	323.8	30.2	
12"	304.8	698	822	600	485	431.8	381.0	31.8	
*18"	457.2	978	1220	Gear Operated	635	577.9	533.4	39.7	
*20"	508.0	978	1300	Gear Operated	700	635.0	584.2	42.9	

\* : Gear Operated

※製作材質詳列於後，可依客戶需求提供其他材料

Flange : ANSI B16.5

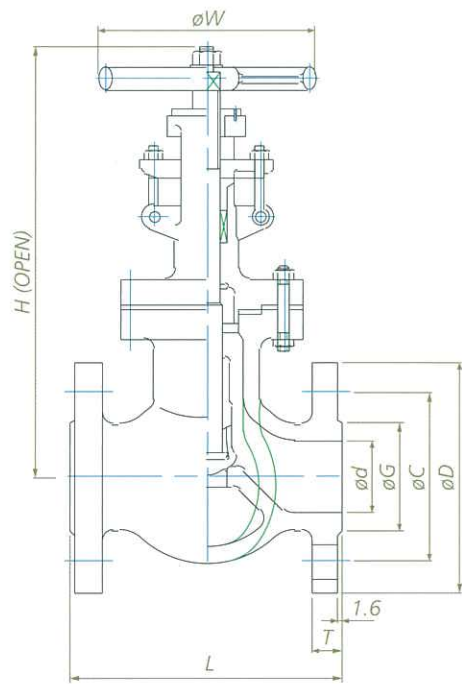
Face To Face :  
ANSI B16.10

Wall Thickness :  
ANSI B16.34

Pressure Test : API 598

Test Pressure			
Shell	Seat		
	By Water	By Water	By Air
31 kg/cm <sup>2</sup> (475 psi)	23 kg/cm <sup>2</sup> (350 psi)	6 kg/cm <sup>2</sup> (80 psi)	

Globe Valve 1/2" ~ 12" x 300LB RF



Dimension (mm)									
Size	d	L	H	W	D	C	G	T	
1/2"	12.7	152	230	100	95	66.7	34.9	14.3	
3/4"	19.1	178	240	100	115	82.6	42.9	15.9	
1"	25.4	203	260	150	125	88.9	50.8	17.5	
1-1/2"	38.1	229	350	200	155	114.3	73.0	20.7	
2"	50.8	267	422	200	165	127.0	92.1	22.3	
3"	76.2	318	520	300	210	168.3	127.0	28.6	
4"	101.6	356	607	300	255	200.0	157.2	31.8	
6"	152.4	444	784	400	320	269.9	215.9	36.6	
8"	203.2	559	868	500	380	330.2	269.9	41.3	
10"	254.0	622	1042	600	445	387.4	323.8	47.7	
12"	304.8	711	1140	700	520	450.8	381.0	50.9	

※製作材質詳列於後，可依客戶需求提供其他材料

Flange : ANSI B16.5

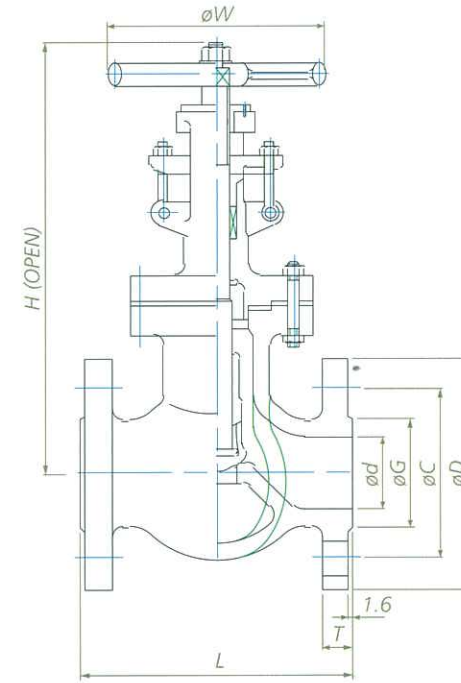
Face To Face :  
ANSI B16.10

Wall Thickness :  
ANSI B16.34

Pressure Test : API 598

Test Pressure			
Shell	Seat		
	By Water	By Water	By Air
79 kg/cm <sup>2</sup> (1175 psi)	58 kg/cm <sup>2</sup> (875 psi)	6 kg/cm <sup>2</sup> (80 psi)	

Globe Valve 1/2" ~ 12" x 600LB RF



Dimension (mm)									
Size	d	L	H	W	D	C	G	T	
1/2"	12.7	152	230	100	95	66.7	34.9	14.3	
3/4"	19.1	178	240	100	115	82.6	42.9	15.9	
1"	25.4	203	260	150	125	88.9	50.8	17.5	
1-1/2"	38.1	229	350	200	155	114.3	73.0	20.7	
2"	50.8	267	422	200	165	127.0	92.1	22.3	
3"	76.2	318	520	300	210	168.3	127.0	28.6	
4"	101.6	356	607	300	255	200.0	157.2	31.8	
6"	152.4	444	784	400	320	269.9	215.9	36.6	
8"	203.2	559	868	500	380	330.2	269.9	41.3	
10"	254.0	622	1042	600	445	387.4	323.8	47.7	
12"	304.8	711	1140	700	520	450.8	381.0	50.9	

※製作材質詳列於後，可依客戶需求提供其他材料

Flange : ANSI B16.5

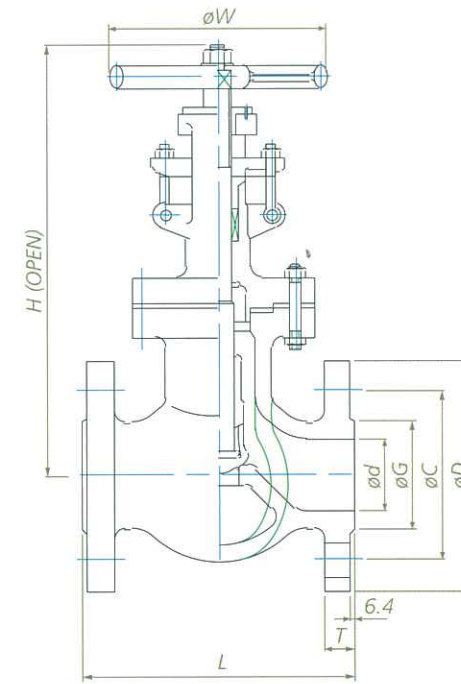
Face To Face :  
ANSI B16.10

Wall Thickness :  
ANSI B16.34

Pressure Test : API 598

Test Pressure			
Shell	Seat		
	By Water	By Water	By Air
158 kg/cm <sup>2</sup> (2325 psi)	116 kg/cm <sup>2</sup> (1725 psi)	6 kg/cm <sup>2</sup> (80 psi)	

Globe Valve 1/2" ~ 4" x 900LB RF



Dimension (mm)									
Size	d	L	H	W	D	C	G	T	
1/2"	12.7	190	200	100	120	82.6	34.9	28.7	
3/4"	19.1	229	260	120	130	88.9	42.9	31.8	
1"	25.4	254	440	120	150	101.6	50.8	35.0	
1-1/2"	38.1	305	500	300	180	123.8	73.0	38.2	
2"	50.8	368	615	300	215	165.1	92.1	44.5	
3"	76.2	381	760	350	240	190.5	127.0	44.5	
4"	101.6	457	868	400	290	235.0	157.2	50.9	

※製作材質詳列於後，可依客戶需求提供其他材料

Flange : ANSI B16.5

Face To Face :  
ANSI B16.10

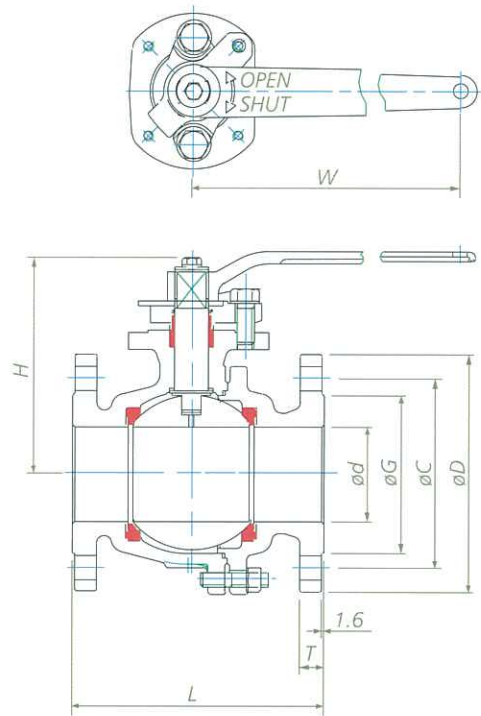
Wall Thickness :  
ANSI B16.34

Pressure Test : API 598

Test Pressure			
Shell	Seat		
	By Water	By Water	By Air
237 kg/cm <sup>2</sup> (3500 psi)	174 kg/cm <sup>2</sup> (2575 psi)	6 kg/cm <sup>2</sup> (80 psi)	



Ball Valve 1/2" ~ 12" x 150LB RF



Dimension (mm)								
Size	d	L	H	W	D	C	G	T
1/2"	12.7	108	54	130	90	60.3	34.9	11.2
3/4"	19.1	117	60	130	100	69.9	42.9	12.8
1"	25.4	127	68	130	110	79.4	50.8	14.3
1-1/2"	38.1	165	85	230	125	98.4	73.0	17.5
2"	50.8	178	110	230	150	120.7	92.1	19.1
3"	76.2	203	156	350	190	152.4	127.0	23.9
4"	101.6	229	192	400	230	190.5	157.2	23.9
6"	152.4	394	260	800	280	241.3	215.9	25.5
8"	203.2	457	317	1100	345	298.5	269.9	28.6
*10"	254.0	533	Gear Operated		405	362.0	323.8	30.2
*12"	304.8	610	Gear Operated		485	431.8	381.0	31.8

\* : Gear Operated

※製作材質詳列於後，可依客戶需求提供其他材料

Flange : ANSI B16.5

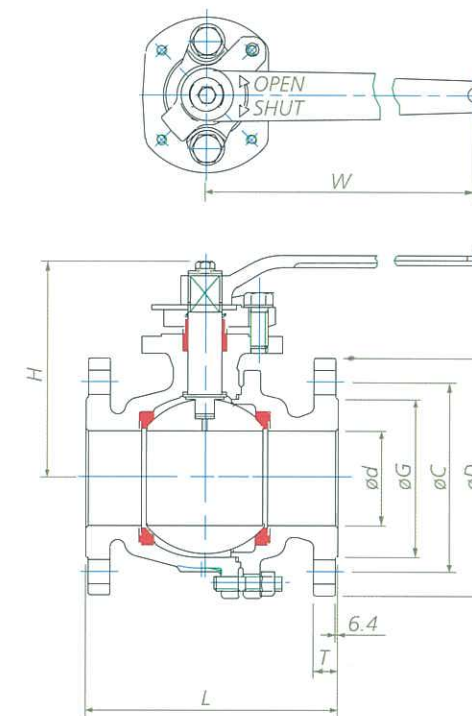
Face To Face :  
ANSI B16.10

Wall Thickness :  
ANSI B16.34

Pressure Test : API 598

Test Pressure		
Shell	Seat	
By Water	By Water	By Air
31 kg/cm <sup>2</sup> (475 psi)	23 kg/cm <sup>2</sup> (350 psi)	6 kg/cm <sup>2</sup> (80 psi)

Ball Valve 2" ~ 6" x 600LB RF



Dimension (mm)								
Size	d	L	H	W	D	C	G	T
2"	50.8	292	110	230	165	127.0	92.1	31.8
2-1/2"	63.5	330	146	350	190	149.2	104.8	35.0
3"	76.2	356	156	400	210	168.3	127.0	38.2
4"	101.6	432	192	800	275	215.9	157.2	44.5
6"	152.4	559	260	1100	355	292.1	215.9	54.1

※製作材質詳列於後，可依客戶需求提供其他材料

Flange : ANSI B16.5

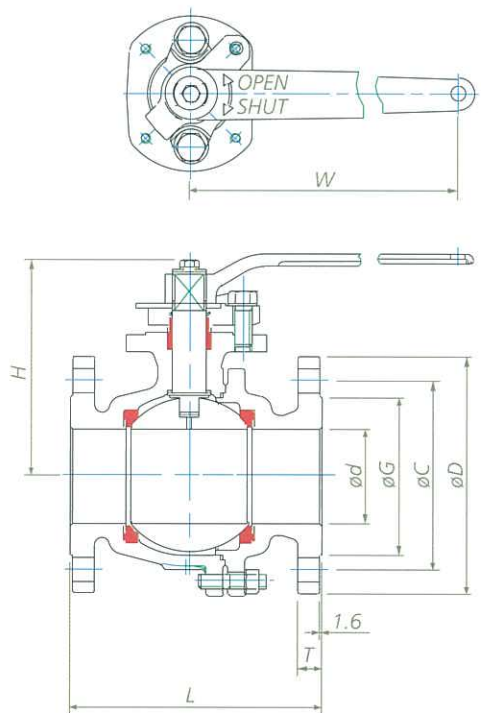
Face To Face :  
ANSI B16.10

Wall Thickness :  
ANSI B16.34

Pressure Test : API 598

Test Pressure		
Shell	Seat	
By Water	By Water	By Air
158 kg/cm <sup>2</sup> (2325 psi)	116 kg/cm <sup>2</sup> (1725 psi)	6 kg/cm <sup>2</sup> (80 psi)

Ball Valve 1/2" ~ 12" x 300LB RF



Dimension (mm)								
Size	d	L	H	W	D	C	G	T
1/2"	12.7	140	54	150	95	66.7	34.9	14.3
3/4"	19.1	152	60	150	115	82.6	42.9	15.9
1"	25.4	165	68	150	125	88.9	50.8	17.5
1-1/2"	38.1	190	85	232	155	114.3	73.0	20.7
2"	50.8	216	110	232	165	127.0	92.1	22.3
3"	76.2	282	156	350	210	168.3	127.0	28.6
4"	101.6	305	192	400	255	200.0	157.2	31.8
6"	152.4	403	260	800	320	269.9	215.9	36.6
8"	203.2	502	317	1100	380	330.2	269.9	41.3
*10"	254.0	568	Gear Operated		445	387.4	323.8	47.7
*12"	304.8	648	Gear Operated		520	450.8	381.0	50.9

\* : Gear Operated

※製作材質詳列於後，可依客戶需求提供其他材料

Flange : ANSI B16.5

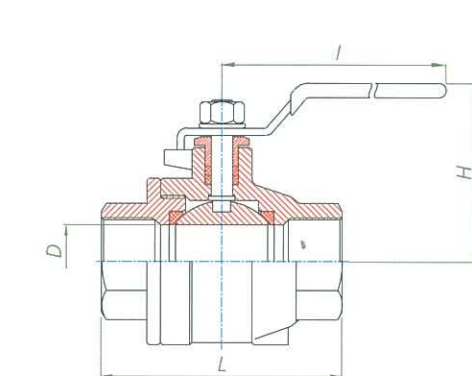
Face To Face :  
ANSI B16.10

Wall Thickness :  
ANSI B16.34

Pressure Test : API 598

Test Pressure		
Shell	Seat	
By Water	By Water	By Air
79 kg/cm <sup>2</sup> (1175 psi)	58 kg/cm <sup>2</sup> (875 psi)	6 kg/cm <sup>2</sup> (80 psi)

二片式不銹鋼球塞閥 1000WOG



Dimension (mm)				
Size	D	L	H	I
1/4"	11.6	55	50	96
3/8"	12.7	55	50	96
1/2"	15.0	65	53	96
3/4"	20.0	77	64	125
1"	25.0	90	66	125
1-1/4"	32.0	102	79	170
1-1/2"	38.0	108	83	170
2"	50.8	125	94	190

※製作材質詳列於後，可依客戶需求提供其他材料

Flange : ANSI B16.5

Face To Face :  
ANSI B16.10

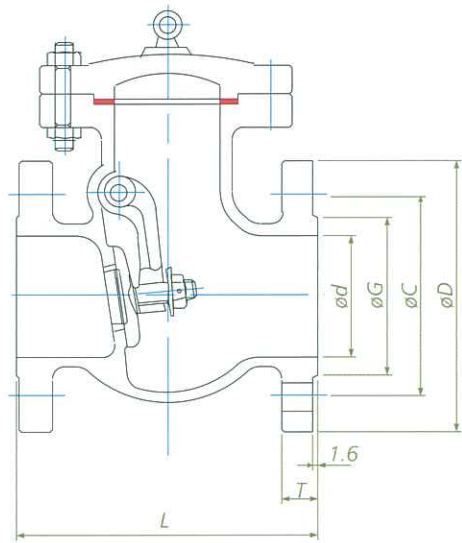
Wall Thickness :  
ANSI B16.34

Pressure Test : API 598

標稱壓力 Working pressure marking---1000 WOG  
常溫下之水、油、氣體 Water、Oil、Air  
at normal temperature-----70kg/ kg/cm<sup>2</sup>  
飽和蒸汽 Saturated steam-----10kg/ kg/cm<sup>2</sup>



Check Valve Swing Type 1/2" ~ 12" x 150LB RF



Dimension (mm)						
Size	d	L	D	C	G	T
1/2"	12.7	108	90	60.3	34.9	11.2
3/4"	19.1	117	100	69.9	42.9	12.8
1"	25.4	127	110	79.4	50.8	14.3
1-1/2"	38.1	165	125	98.4	73.0	17.5
2"	50.8	203	150	120.7	92.1	19.1
3"	76.2	241	190	152.4	127.0	23.9
4"	101.6	292	230	190.5	157.2	23.9
6"	152.4	406	280	241.3	215.9	25.5
8"	203.2	495	345	298.5	269.9	28.6
10"	254.0	622	405	362.0	323.8	30.2
12"	304.8	698	485	431.8	381.0	31.8

※製作材質詳列於後，可依客戶需求提供其他材料

Flange : ANSI B16.5

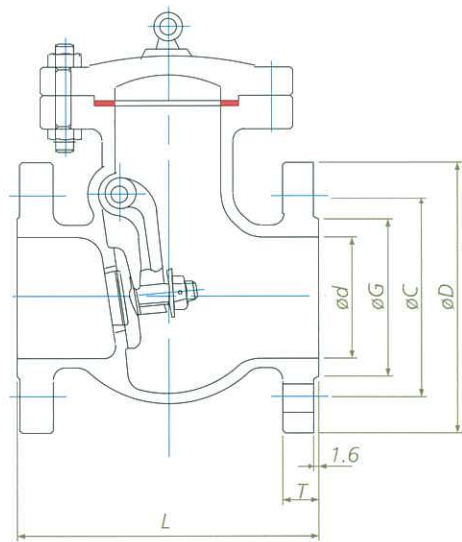
Face To Face :  
ANSI B16.10

Wall Thickness :  
API 594 / ANSI B16.34

Pressure Test : API 598

Test Pressure		
Shell	Seat	
	By Water	By Air
By Water	23 kg/cm <sup>2</sup>	6 kg/cm <sup>2</sup>
(475 psi)	(350 psi)	(80 psi)

Check Valve Swing Type 1/2" ~ 12" x 300LB RF



Dimension (mm)						
Size	d	L	D	C	G	T
1/2"	12.7	178	95	66.7	34.9	14.3
3/4"	19.1	190	115	82.6	42.9	15.9
1"	25.4	216	125	88.9	50.8	17.5
1-1/2"	38.1	241	155	114.3	73.0	20.7
2"	50.8	267	165	127.0	92.1	22.3
3"	76.2	318	210	168.3	127.0	28.6
4"	101.6	356	255	200.0	157.2	31.8
6"	152.4	444	320	269.9	215.9	36.6
8"	203.2	533	380	330.2	269.9	41.3
10"	254.0	622	445	387.4	323.8	47.7
12"	304.8	711	520	450.8	381.0	50.9

※製作材質詳列於後，可依客戶需求提供其他材料

Flange : ANSI B16.5

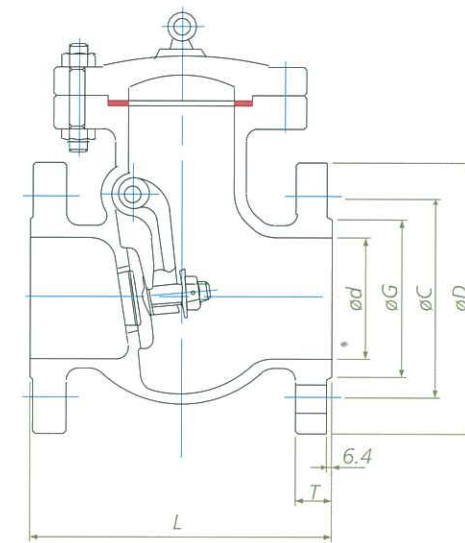
Face To Face :  
ANSI B16.10

Wall Thickness :  
API 594 / ANSI B16.34

Pressure Test : API 598

Test Pressure		
Shell	Seat	
	By Water	By Air
By Water	58 kg/cm <sup>2</sup>	6 kg/cm <sup>2</sup>
(1175 psi)	(875 psi)	(80 psi)

Check Valve Swing Type 1/2" ~ 12" x 600LB RF



Dimension (mm)						
Size	d	L	D	C	G	T
1/2"	12.7	165	95	66.7	34.9	20.7
3/4"	19.1	190	115	82.6	42.9	22.3
1"	25.4	216	125	88.9	50.8	23.9
1-1/2"	38.1	241	155	114.3	73.0	28.7
2"	50.8	292	165	127.0	92.1	31.8
3"	76.2	356	210	168.3	127.0	38.2
4"	101.6	432	275	215.9	157.2	44.5
6"	152.4	559	355	292.1	215.9	54.1
8"	203.2	660	420	349.2	269.9	62.0
10"	254.0	787	510	431.8	323.8	69.9
12"	304.8	838	560	489.0	381.0	73.1

※製作材質詳列於後，可依客戶需求提供其他材料

Flange : ANSI B16.5

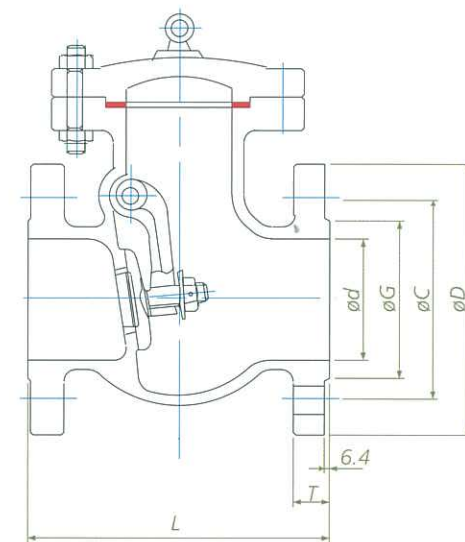
Face To Face :  
ANSI B16.10

Wall Thickness :  
API 594 / ANSI B16.34

Pressure Test : API 598

Test Pressure		
Shell	Seat	
	By Water	By Air
By Water	116 kg/cm <sup>2</sup>	6 kg/cm <sup>2</sup>
(2325 psi)	(1725 psi)	(80 psi)

Check Valve Swing Type 1/2" ~ 6" x 1500LB RF



Dimension (mm)						
Size	d	L	D	C	G	T
1/2"	12.7	216	120	82.6	34.9	28.7
3/4"	19.1	229	130	88.9	42.9	31.8
1"	25.4	254	150	101.6	50.8	35.0
1-1/2"	38.1	305	180	123.8	73.0	38.2
2"	50.8	368	215	165.1	92.1	44.5
3"	76.2	470	265	203.2	127.0	54.1
4"	101.6	546	310	241.3	157.2	60.4
6"	152.4	705	395	317.5	215.9	89.0

※製作材質詳列於後，可依客戶需求提供其他材料

Flange : ANSI B16.5

Face To Face :  
ANSI B16.10

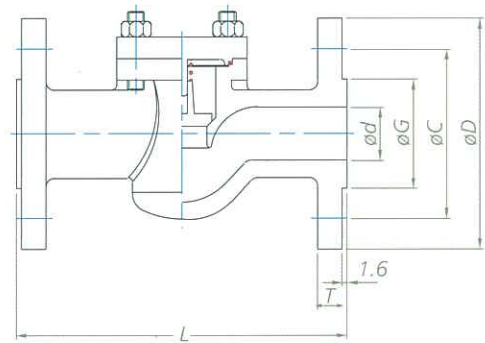
Wall Thickness :  
API 594 / ANSI B16.34

Pressure Test : API 598

Test Pressure		
Shell	Seat	
	By Water	By Air
By Water	290 kg/cm <sup>2</sup>	6 kg/cm <sup>2</sup>
(5825 psi)	(4275 psi)	(80 psi)



Check Valve HOR. LIFT TYPE 1/2" ~ 4" x 150LB RF



Dimension (mm)						
Size	d	L	D	C	G	T
1/2"	12.7	108	90	60.3	34.9	11.2
3/4"	19.1	117	100	69.9	42.9	12.8
1"	25.4	127	110	79.4	50.8	14.3
1-1/2"	38.1	165	125	98.4	73.0	17.5
2"	50.8	203	150	120.7	92.1	19.1
2-1/2"	63.5	216	180	139.7	104.8	22.3
3"	76.2	241	190	152.4	127.0	23.9
4"	101.6	292	230	190.5	157.2	23.9

※製作材質詳列於後，可依客戶需求提供其他材料

Flange : ANSI B16.5

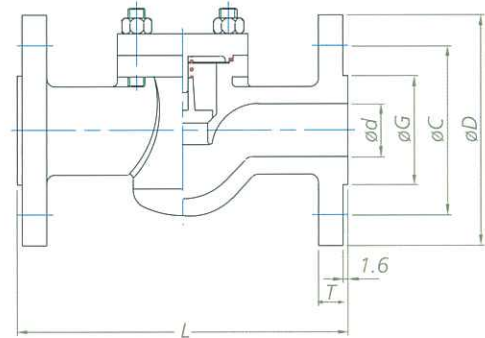
Face To Face :  
ANSI B16.10

Wall Thickness :  
API 594 / ANSI B16.34

Pressure Test : API 598

Test Pressure		
Shell	Seat	
By Water	By Water	By Air
31 kg/cm <sup>2</sup> (475 psi)	23 kg/cm <sup>2</sup> (350 psi)	6 kg/cm <sup>2</sup> (80 psi)

Check Valve HOR. LIFT TYPE 1/2" ~ 4" x 300LB RF



Dimension (mm)						
Size	d	L	D	C	G	T
1/2"	12.7	152	95	66.7	34.9	14.3
3/4"	19.1	178	115	82.6	42.9	15.9
1"	25.4	203	125	88.9	50.8	17.5
1-1/2"	38.1	229	155	114.3	73.0	20.7
2"	50.8	267	165	127.0	92.1	22.3
2-1/2"	63.5	292	190	149.2	104.8	25.5
3"	76.2	318	210	168.3	127.0	28.6
4"	101.6	356	255	200.0	157.2	31.8

※製作材質詳列於後，可依客戶需求提供其他材料

Flange : ANSI B16.5

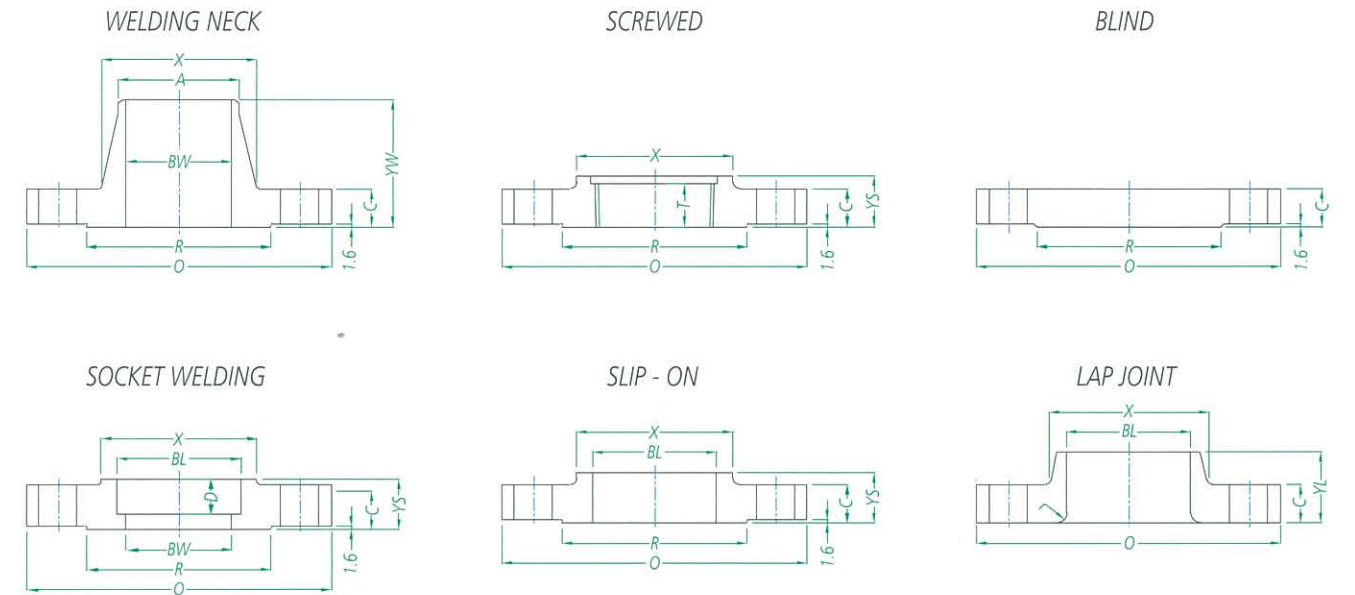
Face To Face :  
ANSI B16.10

Wall Thickness :  
API 594 / ANSI B16.34

Pressure Test : API 598

Test Pressure		
Shell	Seat	
By Water	By Water	By Air
79 kg/cm <sup>2</sup> (1175 psi)	58 kg/cm <sup>2</sup> (875 psi)	6 kg/cm <sup>2</sup> (80 psi)

FLANGE — 150LB



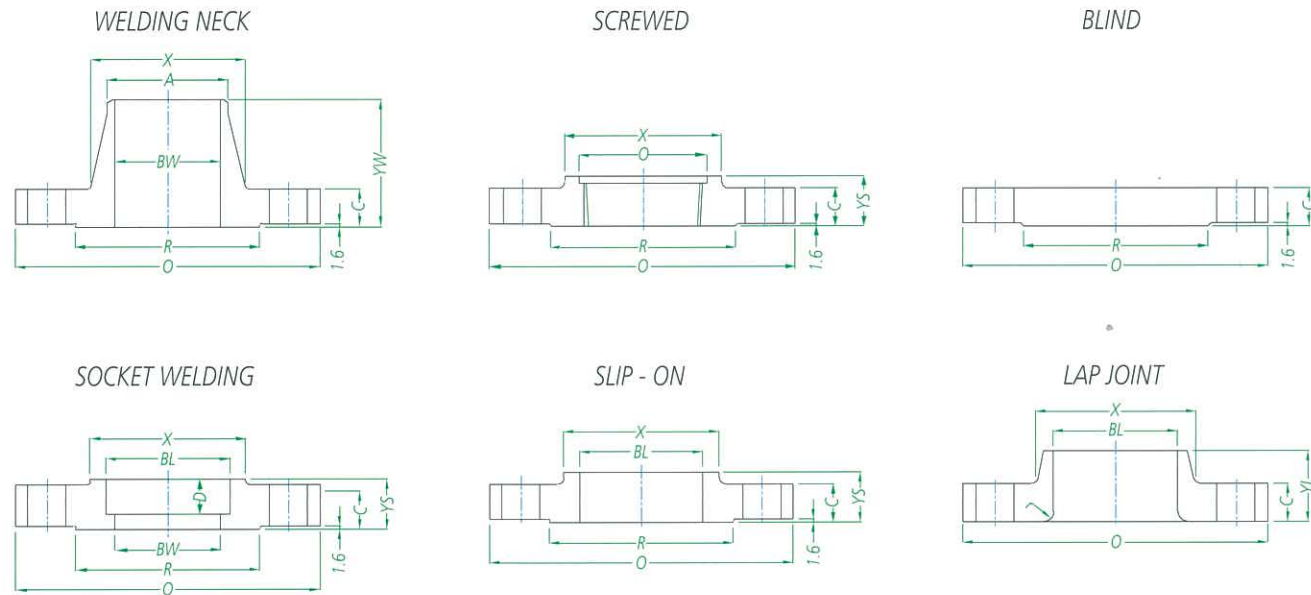
(Dimensions in mm)

Nominal Size (B)	O	C	X	R	A	YS	YW	YL	BS	BW	BL	r	D	Diameter of Bolt Circle	Number of Bolts	Diameter of Bolt Holes	kg / pc			
																	SO	WN	BL	
1/2"	90	11.2	30	34.9	21.3	14	46	16	22.2	15.8	22.9	3	10	60.3	4	1/2	15.9	0.4	0.5	0.5
3/4"	100	12.8	38	42.9	26.7	14	51	16	27.7	20.9	28.2	3	11	60.9	4	1/2	15.9	0.6	0.8	0.9
1"	110	14.3	49	50.8	33.4	16	54	17	34.5	26.6	34.9	3	13	79.4	4	1/2	15.9	0.8	1.1	0.9
1-1/4"	115	15.9	59	63.5	42.2	19	56	21	43.2	35.1	43.7	5	14	88.9	4	1/2	15.9	1	1.4	1.4
1-1/2"	125	17.5	65	73.0	48.3	21	60	22	49.5	40.9	50.0	6	16	98.4	4	1/2	15.9	1.3	1.9	1.8
2"	150	19.1	78	92.1	60.3	24	62	25	61.9	52.5	62.5	8	17	120.7	4	5/8	19.1	2.1	2.8	2.3
2-1/2"	180	22.3	90	104.8	73.0	27	68	29	74.6	62.7	75.4	8	19	139.7	4	5/8	19.1	3.2	4.3	3.2
3"	190	23.9	108	127.0	88.9	29	68	30	90.7	77.9	91.4	10	21	152.4	4	5/8	19.1	3.9	5.2	4.1
3-1/2"	215	23.9	122	139.7	101.6	30	70	32	103.4	90.1	104.1	10	-	177.8	8	5/8	19.1	4.9	6.6	5.9
4"	230	23.9	135	157.2	114.3	32	75	33	116.1	102.3	116.8	11	-	190.5	8	5/8	19.1	5.3	7.4	7.7
5"	255	23.9	164	185.7	141.3	35	87	36	143.8	128.2	144.4	11	-	215.9	8	3/4	22.2	6.8	9.7	9.1
6"	280	25.5	192	215.9	168.3	38	87	40	170.7	154.1	171.4	13	-	241.3	8	3/4	22.2	7.7	12.1	11.8
8"	345	28.6	246	269.9	219.1	43	100	44	221.5	202.7	222.2	13	-	298.5	8	3/4	22.2	12.5	20.1	20.4
10"	405	30.2	305	323.8	273.0	48	100	49	276.2	254.6	277.4	13	-	362	12	7/8	25.4	17.5	28.3	31.8
12"	485	31.8	365	381.0	323.8	54	113	56	327.0	304.8	328.2	13	-	431.8	12	7/8	25.4	27.4	43.0	49.9
14"	535	35.0	400	412.8	355.6	56	125	79	359.2	-	360.2	13	-	476.3	12	1	28.6	34.7	56.2	63.5
16"	595	36.6	457	469.9	406.4	62	125	87	410.5	-	411.2	13	-	539.8	16	1	28.6	44.4	73.2	81.6
18"	635	39.7	505	533.4	457.0	67	138	97	461.8	-	462.3	13	-	577.9	16	1 1/8	31.8	51.9	86.1	99.8
20"	700	42.9	559	584.2	508.0	71	143	103	513.1	-	514.4	13	-	635	20	1 1/8	31.8	61.7	109.7	129.3
24"	815	47.7	663	692.2	610.0	81	151	111	616.0	-	616.0	13	-	749.3	20	1 1/4	34.9	87.4	157.5	195.0

※製作材質詳列於後，可依客戶需求提供其他材料



FLANGE — 300LB

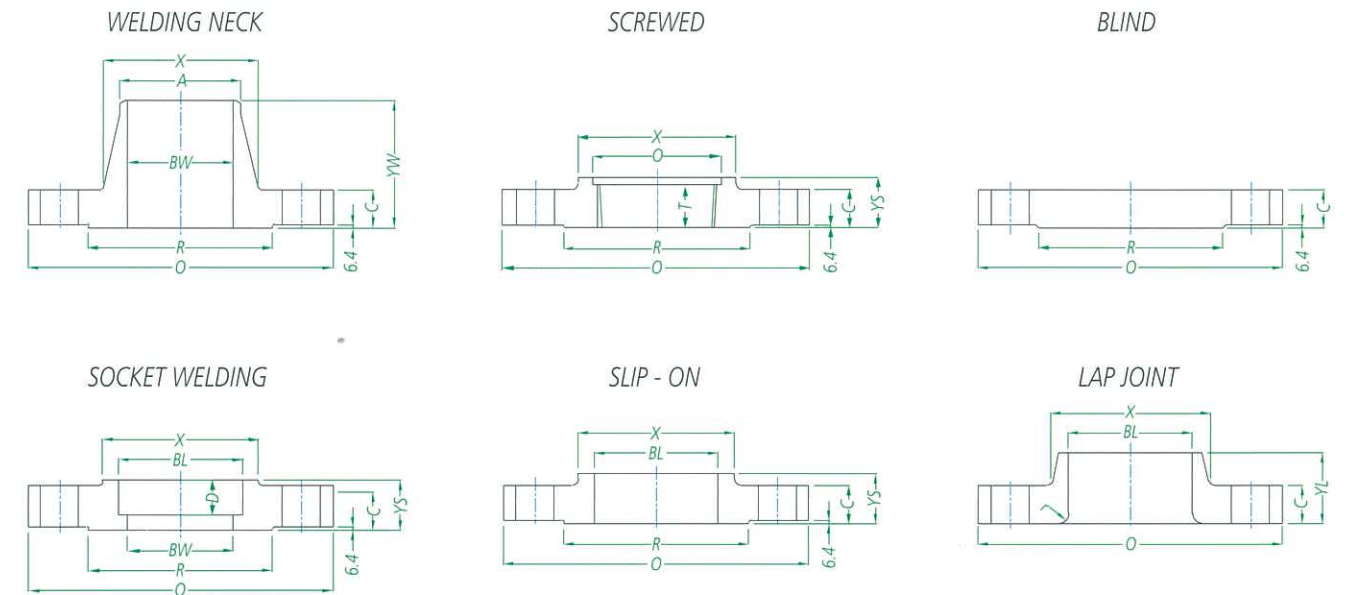


(Dimensions in mm)

Nominal Size (B)	O	C	X	R	A	YS	YW	YL	BS	BW	BL	r	T	D	Diameter of Bolt Circle	Number of Bolts	Diameter of Bolts	Diameter of Bolt Holes	Q	kg / pc		
																				SO	WN	BL
1/2"	95	14.3	38	34.9	21.3	21	51	22	22.2	15.8	22.9	3	16	10	66.7	4	1/2	15.9	23.6	0.6	0.8	0.9
3/4"	115	15.9	48	42.9	26.7	24	56	25	27.7	20.9	28.2	3	16	11	82.6	4	5/8	19.1	29.0	1.1	1.3	1.4
1"	125	17.5	54	50.8	33.4	25	60	27	34.5	26.6	34.9	3	18	13	88.9	4	5/8	19.1	35.8	1.4	1.7	1.6
1-1/4"	135	19.1	64	63.5	42.2	25	64	27	43.2	35.1	43.7	5	21	14	98.4	4	5/8	19.1	44.4	1.7	2.1	2.0
1-1/2"	155	20.7	70	73.0	48.3	29	67	30	49.5	40.9	50.0	6	23	16	114.3	4	3/4	22.2	50.3	2.5	3.0	2.7
2"	165	22.3	84	92.1	60.3	32	68	33	61.9	52.5	62.5	8	29	17	127.0	8	5/8	19.1	63.5	3.3	3.6	3.6
2-1/2"	190	25.5	100	104.8	73.0	37	75	38	74.6	62.7	75.4	8	32	19	149.2	8	3/4	22.2	76.2	4.2	5.3	5.4
3"	210	28.6	117	127.0	88.9	41	78	43	90.7	77.9	91.4	10	32	21	168.3	8	3/4	22.2	92.2	5.9	7.2	7.3
3-1/2"	230	30.2	133	139.7	101.6	43	79	44	103.4	90.1	104.1	10	37	—	184.2	8	3/4	22.2	104.9	7.4	9.2	10.0
4"	255	31.8	146	157.2	114.3	46	84	48	116.1	102.3	116.8	11	37	—	200.0	8	3/4	22.2	117.6	9.7	11.9	12.3
5"	280	35.0	178	185.7	141.3	49	97	51	143.8	128.2	144.4	11	43	—	235.0	8	3/4	22.2	144.4	13.2	16.4	16.8
6"	320	36.6	206	215.9	168.3	51	97	52	170.7	154.1	171.4	13	47	—	269.9	12	3/4	22.2	171.4	15.9	20.8	22.7
8"	380	41.3	260	269.9	219.1	60	110	62	221.5	202.7	222.2	13	51	—	330.2	12	7/8	25.4	222.2	24.7	32.2	36.7
10"	445	47.7	321	323.8	273.0	65	116	95	276.2	254.6	277.4	13	56	—	387.4	16	1	28.6	276.2	35.7	46.6	56.7
12"	520	50.9	375	381.0	323.8	71	129	102	327	304.8	328.2	13	61	—	450.8	16	1 1/8	31.8	328.6	51.6	69.0	83.9
14"	585	54.0	425	412.8	355.6	75	141	111	359.2	—	360.2	13	64	—	514.4	20	1 1/8	31.8	360.4	69.8	93.4	113.4
16"	650	57.2	483	469.9	406.4	81	144	121	410.5	—	411.2	13	69	—	571.5	20	1 1/4	34.9	411.2	87.6	119.6	133.8
18"	710	60.4	533	533.4	457.0	87	157	130	461.8	—	462.3	13	70	—	628.6	24	1 1/4	34.9	462.0	108.7	150.5	179.2
20"	775	63.6	587	584.2	508.0	94	160	140	513.1	—	514.4	13	74	—	685.8	24	1 1/4	34.9	512.8	134.5	184.4	229.1
24"	915	69.9	702	692.2	610.0	105	167	152	616.0	—	616.0	13	83	—	812.8	24	1 1/2	41.3	614.4	203.0	274.7	358.3

※製作材質詳列於後，可依客戶需求提供其他材料

FLANGE — 600LB



(Dimensions in mm)

Nominal Size (B)	O	C	X	R	A	YS	YW	YL	BS	BW	BL	r	T	D	Diameter of Bolt Circle	Number of Bolts	Diameter of Bolts	Diameter of Bolt Holes	Q	kg / pc		
																				SO	WN	BL
1/2"	95	20.7	38	34.9	21.3	22	52	22	22.2	22.9	3	16	10	66.7	4	1/2	15.9	23.6	0.6	0.8	0.9	
3/4"	115	22.3	48	42.9	26.7	25	57	25	27.7	28.2	3	16	11	82.6	4	5/8	19.1	29.0	1.1	1.3	1.4	
1"	125	23.9	54	50.8	33.4	27	62	27	34.5	34.9	3	18	13	88.9	4	5/8	19.1	35.8	1.4	1.7	1.6	
1-1/4"	135	27.1	64	63.5	42.2	29	67	29	43.2	43.7	5	21	14	98.4	4	5/8	19.1	44.4	1.7	2.1	2.0	
1-1/2"	155	28.7	70	73.0	48.3	32	70	32	49.5	50.0	6	23	16	114.3	4	3/4	22.2	50.6	2.5	3.0	2.7	
2"	165	31.8	84	92.1	60.3	37	73	37	61.9	62.5	8	29	17	127.0	8	5/8	19.1	63.5	3.3	3.6	3.6	
2-1/2"	190	35	100	104.8	73.0	41	79	41	74.6	75.4	8	32	19	149.2	8	3/4	22.2	76.2	4.2	5.3	5.4	
3"	210	38.2	117	127.0	88.9	46	83	46	90.7	91.4	10	32	21	168.3	8	3/4	22.2	92.2	5.9	7.2	7.3	
3-1/2"	230	41.4	133	139.7	101.6	49	86	49	103.4	104.1	10	37	—	184.2	8	7/8	25.4	104.9	7.4	9.2	10.0	
4"	275	44.5	152	157.2	114.3	54	102	54	116.1	116.8	11	37	—	215.9	8	7/8	25.4	117.6	9.7	11.9	12.3	
5"	330	50.9	189	185.7	141.3	60	114	60	143.8	144.4	11	43	—	266.7	8	1	28.6	144.4	13.2	16.4	16.8	
6"	355	54.1	222	215.9	168.3	67	117	67	170.7	171.4	13	51	—	292.1	12	1	28.6	171.4	15.9	20.8	22.7	
8"	420	62	273	269.9	219.1	76	133	76	221.5	222.2	13	58	—	349.2	12	1 1/8	31.8	222.2	24.7	32.2	36.7	
10"	510	69.9	343	323.8	273.0	86	152	111	276.2	277.4	13	66	—	431.8	16	1 1/4	34.9	276.2	35.7	46.6	56.7	
12"	560	73.1	400	381.0	323.8	92	156	117	327.0	328.2	13	70	—	489.0	16	1 1/4	34.9	328.6	51.6	69.0	83.9	
14"	605	76.3	432	412.8	355.6	94	165	127	359.2	360.2	13	74	—	527.0	20	1 3/8	38.1	360.4	69.8	93.4	113.4	
16"	685	82.6	495	469.9	406.4	106	178	140	410.5	411.2	13	78	—	603.2	20	1 1/2	41.3	411.2	87.6	119.6	133.8	
18"	745	89	546	533.4	457.0	117	184	152	461.8	462.3	13	80	—	654.0	20	1 5/8	44.5	462.0	108.7	150.5	179.2	
20"	815	95.3	610	584.2	508.0	127	190	165	513.1	514.4	13	83	—	723.9	24	1 5/8	44.5	512.8	134.5	184.4	229.1	
24"	940	108	718	692.2	610.0	140	203	184	616.0	616.0	13	93	—	838.2	24	1 7/8	50.8	614.4	203.0	274.7	358.3	

※製作材質詳列於後，可依客戶需求提供其他材料



HEAT AND CORROSION RESISTANT ALLOYS REFERENCE GUIDE

NICKEL / IRON BASE ALLOYS

DESIGNATION	SPECIFICATION 規格		CHEMICAL COMPOSITION 化學成份(%)									MECHANICAL PROPERTIES 機械性質			
	UNS. NO.	ASTM	碳 C	矽 Si	錳 Mn	鎳 Ni	鉻 Cr	鉬 Mo	銅 Cu	鐵 Fe	其他	抗拉強度 TENSILE STRENGTH Ksi (MPa)	降伏強度 YIELD STRENGTH Ksi (MPa)	伸長率 (%) ELONGATION	強度 HARDNESS
N-12MV Hastelloy®	N10665	A296,A494	0.03 MAX	1.0 MAX	1.0 MAX	Bal	1.0 MAX	26.0 30.0	-	4.0 6.0	V:0.2-0.6	76 (525)	40 (275)	6	-
N-7M Chlorimet 2	N10665	A296,A494	0.03 MAX	1.0 MAX	1.0 MAX	Bal	1.0 MAX	30.0 33.0	-	3.0 MAX	-	76 (525)	40 (275)	20	-
CW-12MW (Hastelloy® C)	-	A494	0.03 MAX	1.0 MAX	1.0 MAX	Bal	15.5 17.5	16.0 18.0	-	4.5 7.5	V:0.2-0.4 W:3.75-5.2	72 (495)	40 (275)	4	93HB
CX2MW	N26022	A494	0.02	0.8	1.0	Bal	20.0 22.5	12.5 14.5	-	2.0 6.0	W:2.5-3.5	80 (550)	45 (280)	30	-
CW-6M Chlorimet 3	-	A494	0.03 MAX	1.0 MAX	1.0 MAX	Bal	17.0 20.0	17.0 20.0	-	3.0 MAX	-	72 (495)	40 (275)	25	93HB
CZ 100 (Nickel)	N02201	A494	1.0 MAX	2.0 MAX	1.5 MAX	95.00 MIN	-	-	1.25 MAX	3.0 MAX	-	50 (345)	18 (125)	10	-
M-35-1 (Monel®)	N04400	A494	0.35 MAX	1.25 MAX	1.5 MAX	Bal	-	-	26.0 33.0	3.50 MAX	-	60 (450)	25 (170)	25	-
M-35-2 (Monel®)	N04400	A494	0.35 MAX	2.0 MAX	1.5 MAX	Bal	-	-	26.0 33.0	3.50 MAX	-	65 (450)	30 (205)	25	-
M-25 (S Monel®)	-	A494	0.25 MAX	3.5 4.5	1.5 MAX	Bal	-	-	27.0 33.0	3.50 MAX	-	-	-	-	300HB
Inconel® (CY-40)	-	A494	0.40 MAX	3.0 MAX	1.5 MAX	Bal	14.0 17.0	-	-	11.0 MAX	-	70 (485)	28 (195)	30	87RB
Hastelloy® D	-	-	0.12 MAX	8.5 10.0	0.5 1.25	Bal	1.0 MAX	-	2.0 4.0	2.0 MAX	Co1.5 MAX	120 (825)	110 (780)	1	37RC
Hastelloy® G	N06007	B581,582 B622	0.04 MAX	0.05 MAX	1.0 2.0	Bal	21.0 23.5	5.5 7.5	1.5 2.5	18.0 21.0	-	85 (586)	30 (207)	30	100RB
Inconel® 671	-	-	0.05 MAX	1.0 MAX	0.3 MAX	Bal	48 52	-	-	1.0 MAX	Ti0.5 Al 0.25 MAX	80 (550)	50 (340)	5	84RB
904L	N08904	B625,673 B649	0.02 MAX	1.0 MAX	2.0 MAX	23.0 28.0	19.0 23.0	4.0 5.0	1.0 2.0	Bal	-	70 (480)	35 (240)	40	70RB
CD-4MCu	J93370	A296,351	0.04 MAX	1.0 MAX	1.0 MAX	4.75 6.00	24.5 26.5	1.75 2.25	2.75 3.25	Bal	-	130 (89G) AGE	92 (634) AGE	20 AGE	305HB AGE
Alloy 20 (CN-7M)	N08020	A351	0.07 MAX	1.5 MAX	1.5 MAX	19.0 22.0	27.5 30.5	2.0 3.0	3.0 4.0	Bal	-	69 (476)	31 (214)	35	130HB
Carpenter® 20CB	-	-	0.07 MAX	1.0 MAX	2.0 MAX	32.0 38.0	19.0 21.0	2.0 3.0	3.0 4.0	Bal	Nb:8X C%~1.0	80 (550)	35 (240)	30	90RB
310 (CK-20)	S31000	A296,351	0.04 0.20	1.75 MAX	1.5 MAX	19.0 22.0	23.0 27.0	0.50	-	Bal	-	76 (524)	38 (262)	37	144HB
317 (CG-8M)	S31700	A296,351	0.08 MAX	1.5 MAX	1.5 MAX	9.0 13.0	18.0 21.0	3.0 4.0	-	Bal	-	82 (565)	44 (303)	45	176HB
CK3MCuN	S31254	A351	0.025 MAX	1.0 MAX	1.2 MAX	17.5 19.5	19.5 20.5	6.0 7.0	0.5 1.0	-	N:0.18-0.24	80 (550)	38 (260)	35	-

\* Hastelloy® is registered trademark of Haynes International Inc.  
\* Monel® / Inconel® is registered trademark of Inco Alloys International Inc.

\* Carpenter® is registered trademark of CarTech International Corp.

HEAT AND CORROSION RESISTANT ALLOYS REFERENCE GUIDE

NICKEL / IRON BASE ALLOYS

MATERIAL CHARACTERISTICS	TYPICAL APPLICATIONS	材料特性	典型應用
Excellent resistance to hydrochloric acid in reducing media, even at high temperatures; oxidation-resistant to 760°C	Equipment and parts dealing with hydrochloric, acetic acids sulfuric acid and phosphoric acid. (Not applicable in oxidizing conditions)	耐所有濃度之鹽酸至沸點，耐其他非氧化性酸及鹽類，如磷酸、醋酸、硫酸、磷酸之設備及零件（建議不在氧化性酸或鹽類中使用）可達760°C。	處理含鹽、醋酸、硫酸、磷酸之設備及零件（建議不在氧化性酸或鹽類中使用）
Resisting such oxidizing agents as wet chlorine, chlorine gas, hypochlorite, hydrochloric, chloride acids, nitric, sulfuric acids; resistance to oxidation to 1040°C	Chemical process equipment such as pumps, valves, piping system and fittings.	耐氧化性酸之腐蝕，如濕氯、氯氣、次氯酸、鹽類、二氧化氯溶液、氯化鐵及硝酸、鹽酸、海水及許多腐蝕性鹽類具備優異耐蝕性，耐氧化性氣至1040°C。	舉凡所有化工、食品、紙漿等製程之設備及零件，皆能廣泛適用，具有極佳之抗蝕特性。
Provides excellent resistance to general corrosion, pitting, crevice corrosion, intergranular attack, and stress corrosion cracking. Superior resistance when applied to oxidations to 1040°C	Piping systems such as pump, valves, flanges and fittings for chemical process related to corrosive fluid.	具備優異耐蝕性；耐氧化性氣至1040°C。	舉凡所有化工、泵、閥類、管件，皆能廣泛適用，具有極佳之抗蝕特性。
Resisting such oxidizing agents as wet chlorine, chlorine gas, hypochlorite, hydrochloric, chloride acids, nitric, sulfuric acids; resistance to oxidation to 1040°C	Chemical process equipment such as pumps, valves, piping system and fittings.	耐氧化性酸之腐蝕，如濕氯、氯氣、次氯酸、鹽類、二氧化氯溶液、氯化鐵及硝酸、鹽酸、海水及許多腐蝕性鹽類具備優異耐蝕性，耐氧化性氣至1040°C。	舉凡所有化工、食品、紙漿等製程之設備及零件，皆能廣泛適用，具有極佳之抗蝕特性。
Cast nickel has excellent toughness, heat-resistance, heat-transferability, and can be readily repaired/welded; corrosion-resistant in atmospheric and marine environments; excellent resistance to caustic alkaline, hydrofluoric acid.	Manufacturer of caustic soda, caustic synthetic fixtures, and food processing plants.	在高溫下處理高濃度無水苛性鈉，具備優異耐蝕性，具耐熱性及熱傳特性，且可立即修焊。	製造苛性鈉及鹼性合成纖維之化工裝置及食品工業（尤其適用於高純度食品之製造）
Corrosion-resistant, esp. to deaired hydrochloric and hydrofluoric acids; corrosion-resistant in seawater; age-hardening M-255 has excellent galling property due to its high silicon content.	Marine fixtures including shafting, valves, pumps, fasteners, and other equipments for handling hydrofluoric acid, seawater and alkaline salt solution. M255 is recommended for pumps, valves and shafts, particularly in the rotating areas because of its excellent wear-resistance.	對鹽酸、氫氟酸（尤其不含空氣時）具備優異耐蝕性。對高溫海水或蒸氣極耐蝕，含Si較高之M-255，可時效硬化，具備優異耐蝕性。	船用裝置，如軸、閥及泵類或處理氫氟酸、海水、強鹼之化工設備。應用於泵、閥、軸等設備之轉動部分及耐用用途。
Good resistance to many acid solutions in both oxidizing and reducing media; excellent resistance to oxidation at high temperatures-up to 1175°C	Manufacturer of photographic materials containing silver, salts, ethylene chloride cracker, furnace trays, muffles, hangers; and equipment for feed water treatment in nuclear power plants.	抗多種氧化特或還原特性酸類溶液腐蝕，抗高溫氧化之特性優異，達1175°C。	聚乙烯裂解爐、熱處理爐之托盤、熔架、掛鈎等含鹽之照相感光材料製造設備，核能廢熱鍋爐供水系統等零件。
Resistance to sulfuric acid and acetic acid; excellent resistance in alkaline environment	Chemical process equipment for sulfuric acid, such as pumps, valves, piping system and fittings.	對硫酸、醋酸具備優異耐蝕性，並耐鹼性之腐蝕環境。	硫酸工廠之化學處理設備如泵、閥及管類。
Good weldability and outstanding resistance to intergranular corrosion, to hot sulfuric acid and phosphoric acid, to mixed acids, sulfuric salts, flue gas, and contaminated nitric acid, etc.	Petrochemical industry handling sulfuric acid and phosphoric acid; also pump and paper industry.	在焊接狀況下，對熱硫酸及磷酸具備優異耐蝕性，對混合酸、氟矽酸、硫酸鹽化合物，已污染硝酸、煙道氣及氫氟酸亦具抗腐蝕特性。	石化工業及紙漿硝化製程之設備及零件。
Outstanding resistance to sulfurization and vanadiumoxide attack at high temperatures.	Applicable to high-temperature(1090°C) and corrosive media, esp. to structural parts, containers, supports, hangers, spacers, etc.	具有極佳之抗高溫硫化、熱腐蝕及耐衝擊之特性。	使用於高溫下之結構零件、容器、支架間隔物、燃油/煤噴嘴等。
Superior to the 300-series stainless steels in resistance to crevice corrosion attack and stress crack corrosion, esp. in solutions containing chlorides.	Components in chemical and petrochemical processes in sulfuric or phosphoric acid media.	在氧化物環境下，較300系列不銹鋼更耐腐蝕及應力腐蝕。	硫酸或磷酸環境之化工裝置。
An age-hardening alloy whose corrosion-resistance is equivalent to that of the 300-series stainless steels; excellent resistance to chloride-induced crevice corrosion and stress crack corrosion.	pumps and valves for sulfuric or nitric production; equipment and parts for chemical industry, pulp and paper industry, textile industry, esp. in high stress areas.	抗蝕性和300系列相當，但可藉時效硬化增加硬度，在含氯離子之環境下，具有極佳之抗應力腐蝕特性。	製造硫酸或硝酸之泵類、閥類設備，或在化學工廠、紙漿廠、纖維廠需抗腐蝕磨耗之耐高應力構件部位。
Austenitic stainless steel with high nickel content; good resistance to stress crack corrosion in 20%-40% of sulfuric acid; corrosion resistance to a wide range of phosphoric acid solutions even in boiling condition.	Pumps, valves, and facilities for handling sulfuric of phosphoric acid.	耐所有濃度之硫酸至沸騰溫度。在許多酸鹼腐蝕環境中具有極佳之抗應力腐蝕特性。	處理硫酸或磷酸之應用閥、泵類及酸洗設備。
An improved CN-7M with lower sensitivity to intergranular corrosion and stress crack corrosion, due to addition of carbon stabilizer(Nb).	Pumps, valves, and facilities for handling sulfuric or phosphoric acid solutions.	與ALLOY 20為同系列合金，但Ni含量較高，更具穩定性且含碳穩定劑Nb，較不易發生晶界腐蝕及應力腐蝕破裂。	處理硫酸或磷酸之應用閥、泵類及酸洗設備。
Excellent resistance to boiling nitric acid in less than 70% concentration; resistant to hot sulfuric acid up to 950°C	Structural parts in furnace; nozzles handling oil/ coal in steel making furnaces.	對濃度70%以下之硝酸，自常溫至沸騰的情況下皆有極優之抗蝕性。可耐中等濃度高溫環境到950°C左右。	高溫爐之構件 鋼鐵廠煉煤/油噴嘴
Resistance to pitting and crevice corrosion at ambient temperature; CF-3 with low carbon content is highly resistant to medium concentration of boiling acetic acid and to dilute hydrochloric acid.	Heat exchangers and distillators for acetic acid production; pumps, valves and piping system for handling water, oil, etc.	在高溫下抗含鹵素離子所產生之孔蝕或腐蝕。低碳級不銹鋼較不易析出碳化物，抗蝕性佳，可耐中濃度沸騰醋酸之腐蝕。	有機酸製造之製程設備及材料；如生產醋酸的蒸餾器和熱交換器。在還原環境下之火、油、氣所使用之各種泵、閥類及零件。
High performance austenitic stainless steel and superior to conventional stainless steel with higher content of Nickel, Chromium, Molybdenum. The Nitrogen content also increased the capability of corrosion resistance.	Most popular application on the piping material such as valves, flanges, bolts/nuts and fitting for the general corrosive application.	具有比不銹鋼更佳之抗腐蝕特性。	應用於管材料，舉凡閥類、法蘭、螺栓帽，皆能廣泛適用。